

TaxTally Fuel Tax Update 2024 Q3

CONTENTS

Important Notices – Read Carefully Before Installing	2
Important Note for Adobe Acrobat Reader Users	2
Disabling User Account Control (UAC) – Required Before Installing Update	2
<i>Disabling UAC in Windows 8, 10, and 11</i>	2
Tax Rate Update Instructions	4
Further Assistance	5

Important Notices – Read Carefully Before Installing

- Each revision of this document replaces all previous versions. Check the revision date on the title page when comparing documents.
- This update must be installed on a computer that has access to TaxTally.
- Windows User Account Control (UAC) must be temporarily disabled on the installation computer. (Instructions appear later in this document.)
- All Prophesy programs must be closed on all computers, including the installation computer.
- You must stay connected to the Internet during the update process.
- If you are using an Agency, Multi-Company or Multi-Fleet version of Prophesy TaxTally, you must repeat some steps of the update for each fleet or company in your system.
- Körber is not responsible for the accuracy of fuel tax filings. Please carefully verify your fuel tax rates and report totals before filing tax returns.
- Our Support team experiences high call volumes at the end of each tax-reporting month, which can lead to longer response times and the possibility of overdue filing. Therefore, it is highly recommended that you prepare your tax reports as early as possible so that there is ample time to resolve any issues that may arise.

Important Note for Adobe Acrobat Reader Users

If you use the latest version of Adobe Acrobat Reader, you might be unable to open IFTA forms due to Adobe's new security features. To fix this issue:

1. In Acrobat Reader, click **Edit > Preferences**.
2. Select the **Security (Enhanced)** category at the left.
3. Uncheck the **Enable Protected Mode at Startup** and **Enable Enhanced Security** checkboxes.
4. Click **OK**. The changes will take effect next time you open Acrobat Reader.

Disabling User Account Control (UAC) – Required Before Installing Update

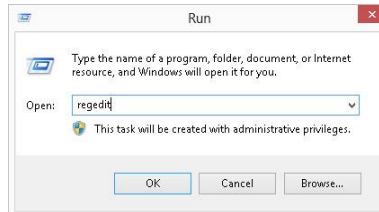
Before the tax rate update can be installed, you must temporarily disable Windows User Account Control (UAC). This is a built-in Windows security feature and as such we recommend that you re-enable it after the update is complete.

Disabling UAC in Windows 8, 10, and 11

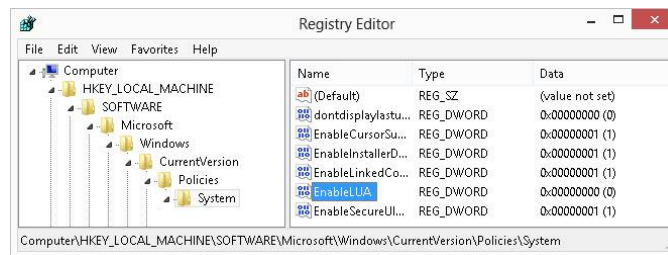
IMPORTANT: Because this process involves manipulation of the system registry, **it is recommended that the following be performed by or under the supervision of a qualified IT professional or person(s) familiar with Windows operating systems.**

UAC must be disabled in Windows 8 and 10 prior to performing this installation. However, Microsoft has removed the ability to completely disable UAC via the Control Panel and a registry modification is now required:

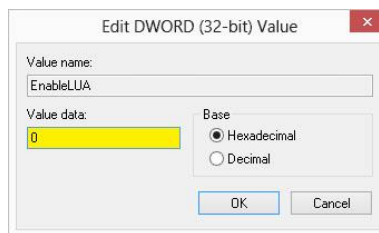
1. Press and hold the Windows key on the keyboard and press **R** to open the Run command.
2. Type “regedit” and click **OK**.



3. Navigate to the following registry folder in the Registry Editor:
HKEY_LOCAL_MACHINE\SOFTWARE\Microsoft\Windows\CurrentVersion\Policies\System



4. Double click the **EnableLUA** value on the right pane.
5. Change the **Value data** field to “0” (zero) and click **OK**.



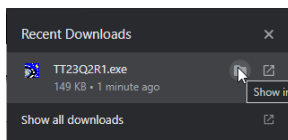
6. Restart the PC.
7. When the computer has completely restarted, the installation may now be performed.
8. When the installation is complete, it is recommended that UAC be re-enabled to ensure the PC remains protected. To do so, repeat all of the preceding steps but change the **Value data** field of **EnableLUA** in step 5 to “1” (one).

Reminder: You must restart the PC after both disabling and enabling UAC.

Tax Rate Update Instructions

Note: If you are using an Agency, Multi-Company or Multi-Fleet version of Prophecy TaxTally, you must repeat steps 7-11 below for each fleet or company in your system.

1. Visit www.fueltaxrates.com.
2. Read all important reminders and check the confirmation checkbox, and then click **Download the Update**.
3. When the file is done downloading, open the folder where it was saved. By default, this is your Downloads folder.



Chrome



Edge



Firefox

4. Right-click on the file and click **Run as Administrator**. Be sure you have disabled User Account Control before starting this step. (See earlier in this document.)
5. Follow the instructions on each installation screen, and enter the password provided to you in our quarterly email.
6. Click **Finish** when complete.
7. Open Prophecy TaxTally and click **Utility > Update Tax Rates**.
8. Select the "taxrates" file in the list at the left side of the window, select whether to install the rates using US or Canadian units, and click **Install**.
9. Verify all applicable tax rates, and verify that the version number is as follows (note that the last two digits may be higher):

3-2024-01

10. Click **Update**.
11. When done, open the Preferences window (press **F2** on your keyboard), and verify that your Rates version is as shown above.
12. If you report fuel taxes for multiple companies, you must complete steps 7-11 for each company in your system.

NOTE: The first two sets of digits in the version number contain the quarter and year, and the last set is the revision number. If your revision number is lower than the one shown here, repeat from step 1 to check for a newer revision of the rates file. If the quarter and/or year are incorrect, you might not be using the correct rates file. Ensure that you are selecting the "taxrates" file in the active Prophesy\TaxTally folder and repeat from step 1 if that does not help.

Further Assistance

If you need help with downloading and installing this update, please visit our Support Videos page at:

mile.com/support-videos

Click on the video entitled **How to Download and Install the Prophesy TaxTally Rates Update**.

If you have further questions, please call 800-776-6707 or open a support case at:

<https://kscs.service-now.com/csm>

If you do not have your helpdesk login info, please use the **Forgot your password?** link on the login page. If the utility is unable to find your account information, please email ptsusername.sc.msp@koerber-supplychain.com for assistance.